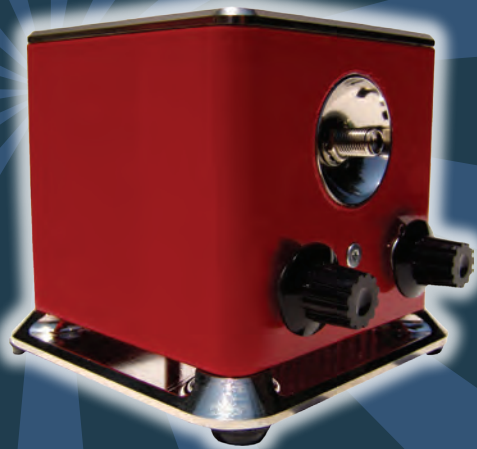


# Cool Red

Infrared Light Source

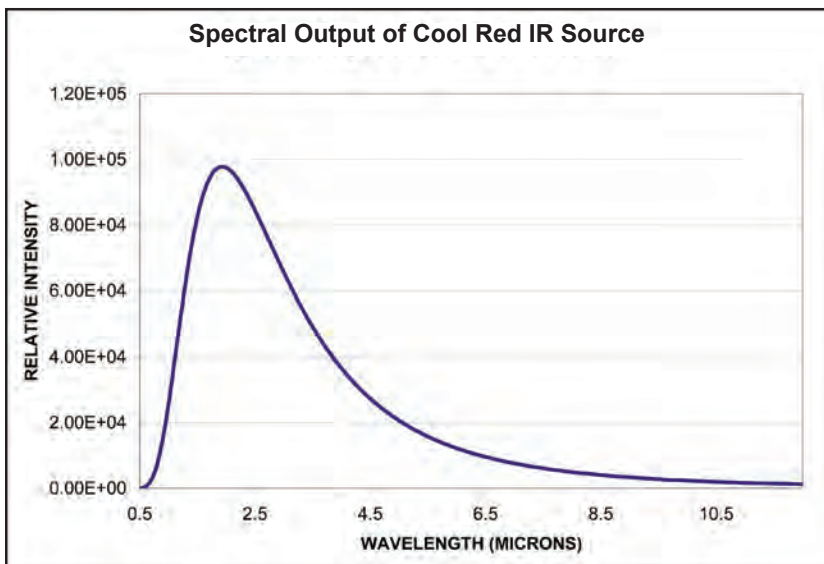


The Cool Red works beautifully as a complement to mid-infrared analyzers or in any spectroscopy application where high-intensity infrared light is required. Cool Red is especially useful for applications in the region from 1000-5000 nm. For systems that require optical modulation, an integrated optical shutter can be modulated at frequencies of up to 200 Hz.

The shutter can be driven externally through a 15-pin digital interface. If no external drive is available, the shutter can be driven internally by an integrated adjustable square wave generator.

Frequency can be continually adjusted through the control knob on the front panel from 0.5 Hz to 200 Hz. The digital output for this signal can be taken from the same 15-pin interface and used to synchronize other devices.

Lamp	
Material:	Silicon Nitride (Si3N4)
Temperature:	1500 °K
Lifetime:	2,000 hours
Warm-up time:	12 seconds
Power:	50 Watts
Shutter	
Shutter frequency:	200 Hz
Additional Information	
Replacement lamps:	CR-Lamp-50W
Power Supply Requirements	
5 amps, 24 volts 5.5 mm OD/3 mm ID Universal input power supply included	
Dimensions	
127 mm x 127 mm x 114.3 mm	



**SPECTROMETERS | SAMPLING ACCESSORIES | WORLD CLASS SERVICE**



[www.oceanoptics.com](http://www.oceanoptics.com) | [info@oceanoptics.com](mailto:info@oceanoptics.com)  
+1 727-733-2447

