

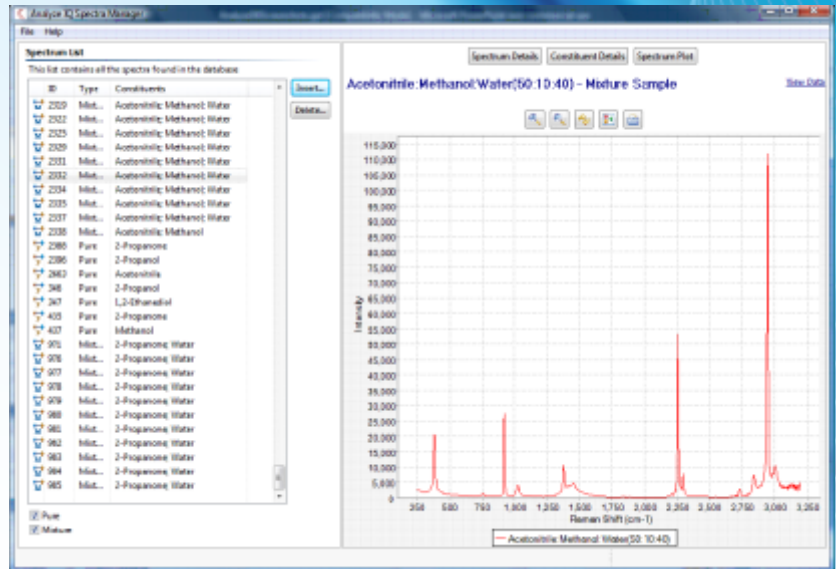
# Analyze IQ Spectra Manager



Analyze IQ Spectra Manager is part of the Analyze IQ product suite, which has been designed to address the need for accurate analysis of spectroscopic data from mixtures of materials.

Spectra Manager is a spectral database and data management package that allows users to easily manage a library of spectra. Features include:

- Ability to store CAS registry numbers and QA details
- Retrieval and listing of spectra by IUPAC and common names
- Tracking of mixtures that use the same materials by lot numbers



Spectra Manager links seamlessly with Analyze IQ

Lab, allowing users to select data from their database for the development of Analyze IQ models. Functionality is provided to "auto-select" the training set, by scanning the databases for all samples that include the target material and other relevant samples, such as those that contain materials that occur in mixtures with the target material.

The screenshot above shows the Spectra Manager user interface, with spectra listings on the left and the Raman spectrum on the right.

## Raman Spectra Library

Acetonitrile: Methanol: Water(10:90:10) - Mixture Sample	
<b>Spectral Acquisition Details</b>	
The details in blue cannot be changed.	
SFC Name	MS0801V008.LLS
Date of collection	28/01/2006
Time of collection	11:45
Number of spectra collected	1
Instrument name	RamanPro
Wavenumber range sampled	
Minimum (cm-1)	2500
Maximum (cm-1)	3000.0
Number of data points	1492
Collected by	Marisa Phelan
Spectral acquisition time (secs)	21
Scans acquired per spectrum	21
Directory	
<b>Log Details</b>	
Details from the SFC log section	
Sample Label	Acetonitrile: Methanol: Water(10:90:10)
Grating (lines/mm)	
Excitation Line (nm)	785
Spec. Width (nm)	
Aperture Setting	
Objective Lens	
<b>Mixture Details</b>	
Mixture prepared by	MP
Date of preparation	28/01/2006
Notes about preparation	

Analyze IQ Spectra Manager users can also purchase a carefully curated library of 1,870 Raman spectra, including the exact composition of each material and all associated data.

The second screenshot shows the display panel for the sample information, in this case a mixture. When entering the spectral data, one can incorporate a wide range of additional data (manufacturer, lot number, appearance, purity, IUPAC name, common name and other details).



[www.oceanoptics.com](http://www.oceanoptics.com)  
[info@oceanoptics.com](mailto:info@oceanoptics.com)  
+1 727-733-2447

