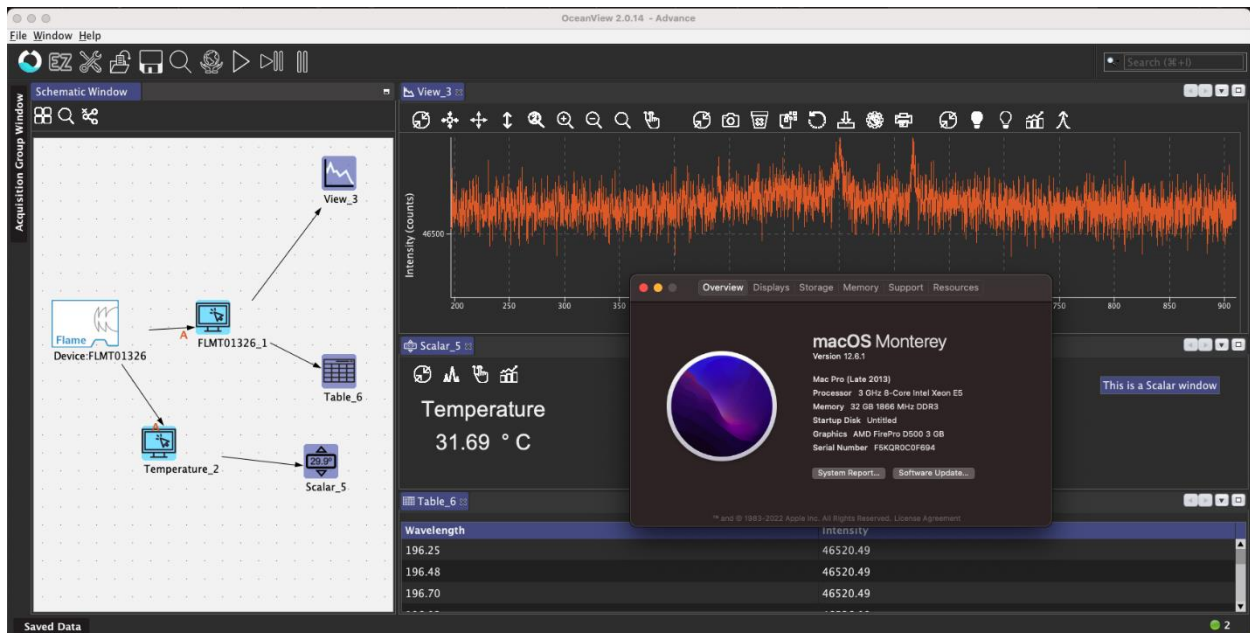


# Oceanview Running in Monterey



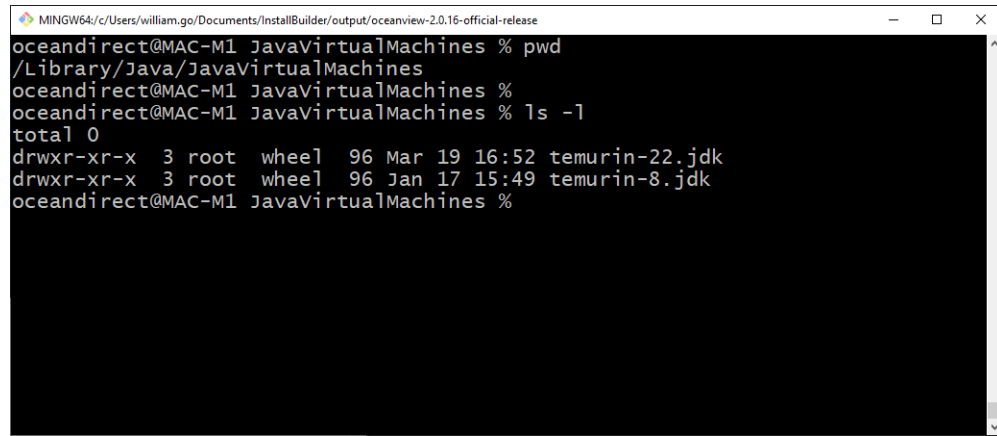
## Oceanview Setup for macOS Monterey

1. Install Rosetta 2 for ARM based mac machine. From the terminal, run the command
  - `softwareupdate --install-rosetta`
2. Install java8. I use brew to do this.
  - **Apple intel**
    - o `brew install openjdk@8`

```
opt — -bash — 102x25
OI-WS-MCO-0032:opt omnidriver$ pwd
/usr/local/opt
OI-WS-MCO-0032:opt omnidriver$
OI-WS-MCO-0032:opt omnidriver$ ll openjdk*
lrwxr-xr-x  1 oceandirect  admin  20 Oct 31 14:28 openjdk -> ../Cellar/openjdk/19
lrwxr-xr-x  1 oceandirect  admin  20 Oct 31 14:28 openjdk@19 -> ../Cellar/openjdk/19
lrwxr-xr-x  1 oceandirect  admin  29 Oct 31 14:29 openjdk@8 -> ../Cellar/openjdk@8/1.8.0+345
OI-WS-MCO-0032:opt omnidriver$
```

- **Apple silicon**

- brew tap homebrew/cask-versions
- brew install --cask temurin8 (or brew install --cask temurin@8)




```
MINGW64~/Users/william.go/Documents/InstallBuilder/output/oceanview-2.0.16-official-release
oceandirect@MAC-M1 JavaVirtualMachines % pwd
/Library/Java/JavaVirtualMachines
oceandirect@MAC-M1 JavaVirtualMachines %
oceandirect@MAC-M1 JavaVirtualMachines % ls -l
total 0
drwxr-xr-x  3 root  wheel  96 Mar 19 16:52 temurin-22.jdk
drwxr-xr-x  3 root  wheel  96 Jan 17 15:49 temurin-8.jdk
oceandirect@MAC-M1 JavaVirtualMachines %
```

3. Add java path to the PATH environmental variable. Put these lines in your shell profile file:

- **Apple intel**

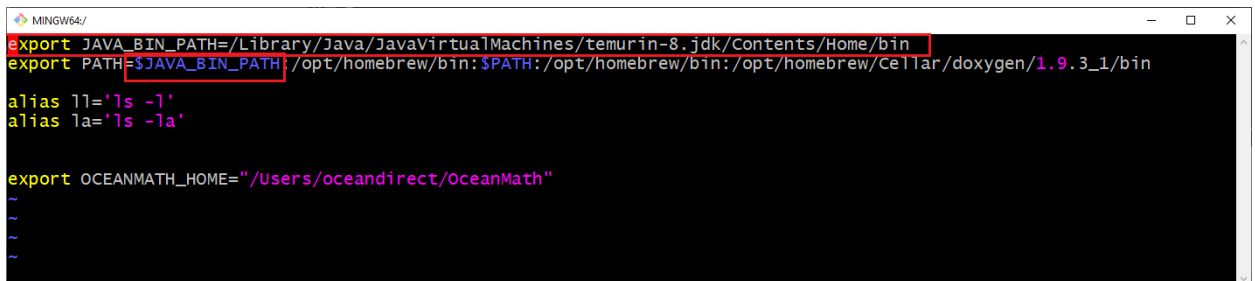
```
export PATH=/usr/local/opt/openjdk@8/bin:$PATH
```



```
omnidriver — vim .bash_profile — 118x12
alias ll='ls -l'
alias la='ls -la'
export PATH=/usr/local/opt/openjdk@8/bin:/Users/omnidriver/VMware_InstallBuilder_Professional_21.12.0/bin:$PATH
```

- **Apple silicon**

```
export JAVA_BIN_PATH=/Library/Java/JavaVirtualMachines/temurin-8.jdk/Contents/Home/bin
export PATH=$JAVA_BIN_PATH:/opt/homebrew/bin:$PATH
```



```
MINGW64/
export JAVA_BIN_PATH=/Library/Java/JavaVirtualMachines/temurin-8.jdk/Contents/Home/bin
export PATH=$JAVA_BIN_PATH:/opt/homebrew/bin:$PATH:/opt/homebrew/bin:/opt/homebrew/Cellar/doxygen/1.9.3_1/bin
alias ll='ls -l'
alias la='ls -la'
export OCEANMATH_HOME="/Users/oceandirect/OceanMath"
~
~
```

4. Mount the .DMG file and it will be located under /Volumes folder.

- hdiutil attach ./OceanViewSetup\_2\_0\_14\_Mac.dmg

```
NetBeans -- -bash -- 107x26
OI-WS-MCO-0032:OceanViewSetup omnidriver$ pwd
/Volumes/OceanViewSetup
OI-WS-MCO-0032:OceanViewSetup omnidriver$
OI-WS-MCO-0032:OceanViewSetup omnidriver$ ll
total 224
lrwxr-xr-x  1 omnidriver  staff    13 Mar 27  2013 Applications -> /Applications
-rw-r--r--  1 omnidriver  staff 109503 Oct 25 14:24 OceanView License.pdf
drwxr-xr-x@ 3 omnidriver  staff   102 Oct 25 14:24 OceanView.app
drwxr-xr-x@ 4 omnidriver  staff   136 Mar 27  2013 background
OI-WS-MCO-0032:OceanViewSetup omnidriver$
OI-WS-MCO-0032:OceanViewSetup omnidriver$
OI-WS-MCO-0032:OceanViewSetup omnidriver$ cd ./OceanView.app/Contents/Resources/NetBeans
OI-WS-MCO-0032:NetBeans omnidriver$
OI-WS-MCO-0032:NetBeans omnidriver$ pwd
/Volumes/OceanViewSetup/OceanView.app/Contents/Resources/NetBeans
OI-WS-MCO-0032:NetBeans omnidriver$
OI-WS-MCO-0032:NetBeans omnidriver$ ll
total 0
drwxr-xr-x  9 omnidriver  staff  306 Oct 25 14:24 oceanview
drwxr-xr-x  6 omnidriver  staff  204 Oct 25 14:24 standards
OI-WS-MCO-0032:NetBeans omnidriver$
```

5. Create an oceanview folder in your home directory.
  - `mkdir OceanViewSetup_2_0_14`
6. Copy the files from the mounted .DMG file.
  - `cd /Volumes/OceanViewSetup/Oceanview.app/Contents/Resources/NetBeans`
  - `cp -r * ~/OceanViewSetup_2_0_14`
7. Unmount the .DMG file
  - `cd ~/`
  - `hdiutil detach -force /Volumes/OceanViewSetup`
8. Edit the launch script.
  - `cd ~/OceanViewSetup_2_0_14/oceanview/bin`
  - edit the `OceanViewMac.sh` file and add the red line below.
    - **Apple intel**  
`-J-Dcom.apple.mrj.application.apple.menu.about.name=OceanView \  
--jdkhome /usr/local/opt/openjdk@8 \  
--userdir /tmp/oceanview-$USER \`

```
bin - vim ./OceanViewMac.sh - 88x29
#### [#3128] prompt the user to install Java if needed
java --request >/dev/null 2>&1

cd "$plathome"
OCEANVIEW_HOME=.
CLUSTER=oceanview

#echo "OCEANVIEW_HOME = [${OCEANVIEW_HOME}]"
#echo "current directory = [ `pwd` ]"

chmod +x $OCEANVIEW_HOME/platform/lib/nbexec
export TURBOACTIVATE_LIBRARY=`pwd`/$CLUSTER/modules/lib

$OCEANVIEW_HOME/platform/lib/nbexec \
-J-Xmx1024m \
-J-Djava.library.path=$OCEANVIEW_HOME/$CLUSTER/modules/lib \
-J-Dapple.laf.useScreenMenuBar=true \
-J-Dapple.laf.brushMetalLook=true \
-J-Xdock:name=OceanView \
-J-Xdock:icon=application-icons/OceanView.icns \
-J-Dcom.apple.mrj.application.apple.menu.about.name=OceanView \
--jdkhome /usr/local/opt/openjdk@8 \
--userdir /tmp/oceanview-$USER \
--branding $CLUSTER \
--clusters $OCEANVIEW_HOME/$CLUSTER
```

o **Apple silicon**

```
-J-Dcom.apple.mrj.application.apple.menu.about.name=OceanView \
--jdkhome /Library/Java/JavaVirtualMachines/temurin-8.jdk/Contents/Home \
--userdir /tmp/oceanview-$USER \
```

```
MINGW64/
cd "$plathome"
OCEANVIEW_HOME=.
CLUSTER=oceanview

#echo "OCEANVIEW_HOME = [${OCEANVIEW_HOME}]"
#echo "current directory = [ `pwd` ]"

chmod +x $OCEANVIEW_HOME/platform/lib/nbexec
export TURBOACTIVATE_LIBRARY= `pwd` /$CLUSTER/modules/lib

$OCEANVIEW_HOME/platform/lib/nbexec \
-J-Xmx1024m \
-J-Djava.library.path=$OCEANVIEW_HOME/$CLUSTER/modules/lib \
-J-Dapple.laf.useScreenMenuBar=true \
-J-Dapple.laf.brushMetalLook=true \
-J-Xdock:name=OceanView \
-J-Xdock:icon=application-icons/OceanView.icns \
-J-Dcom.apple.mrj.application.apple.menu.about.name=OceanView \
--jdkhome /Library/Java/JavaVirtualMachines/temurin-8.jdk/Contents/Home \
--userdir /tmp/oceanview-$USER \
--branding $CLUSTER \
--clusters $OCEANVIEW_HOME/$CLUSTER
```

- save changes and exit.

9. Launch application

./OceanViewMac.sh